

A photograph of a historic building at dusk. The building features a mix of red brick and white-painted brickwork. A long section on the left has a series of tall, narrow, multi-paned windows that are illuminated from within. To the right, a white-painted section has a large, dark wooden double door with a transom window, and a smaller arched window with black shutters. A small black sign with a white logo hangs from a light fixture above the white section. In the background, a taller brick building with a chimney labeled 'CROWN' is visible. The foreground shows a wet street and sidewalk reflecting the ambient light.

DYE HOUSE

Olneyville, Providence

Dye House is an invisible service boutique hotel and event space offering a unique, thoughtfully-curated guest experience, designed for a diverse set of occasions and gatherings.



INSPIRED BY History Design Community



Once a dye house and weaving room for American Woolen & the Weybosset Mill Complex, later a ceramics studio for J Schatz, this building has a rich history. Today, Dye House is a destination for travelers and locals, a meeting place for the community and event space where family and friends can gather and celebrate.



American Woolen Co., Washington Mills, Lawrence, Mass.

HISTORY



MODERN TRUCKING

DYE
HOUSE
2020



2007

STUDIO AD
architecture

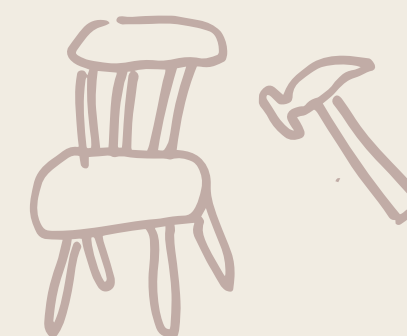
2015

J. SCHATZ pottery studio



1980s

ALHBORG & SONS
furniture making



1934-1950

WELSH MANUFACTURING
leases the mills from American
Woolen for the production of
fountain pens and eye glasses



AMERICAN WOOLEN
purchases the company
and complex



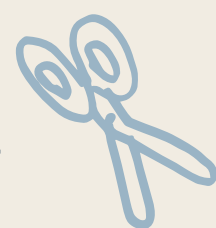
1900

WEYBOSSET MILLS opens under
the Weybosset Corporation

1864

1880

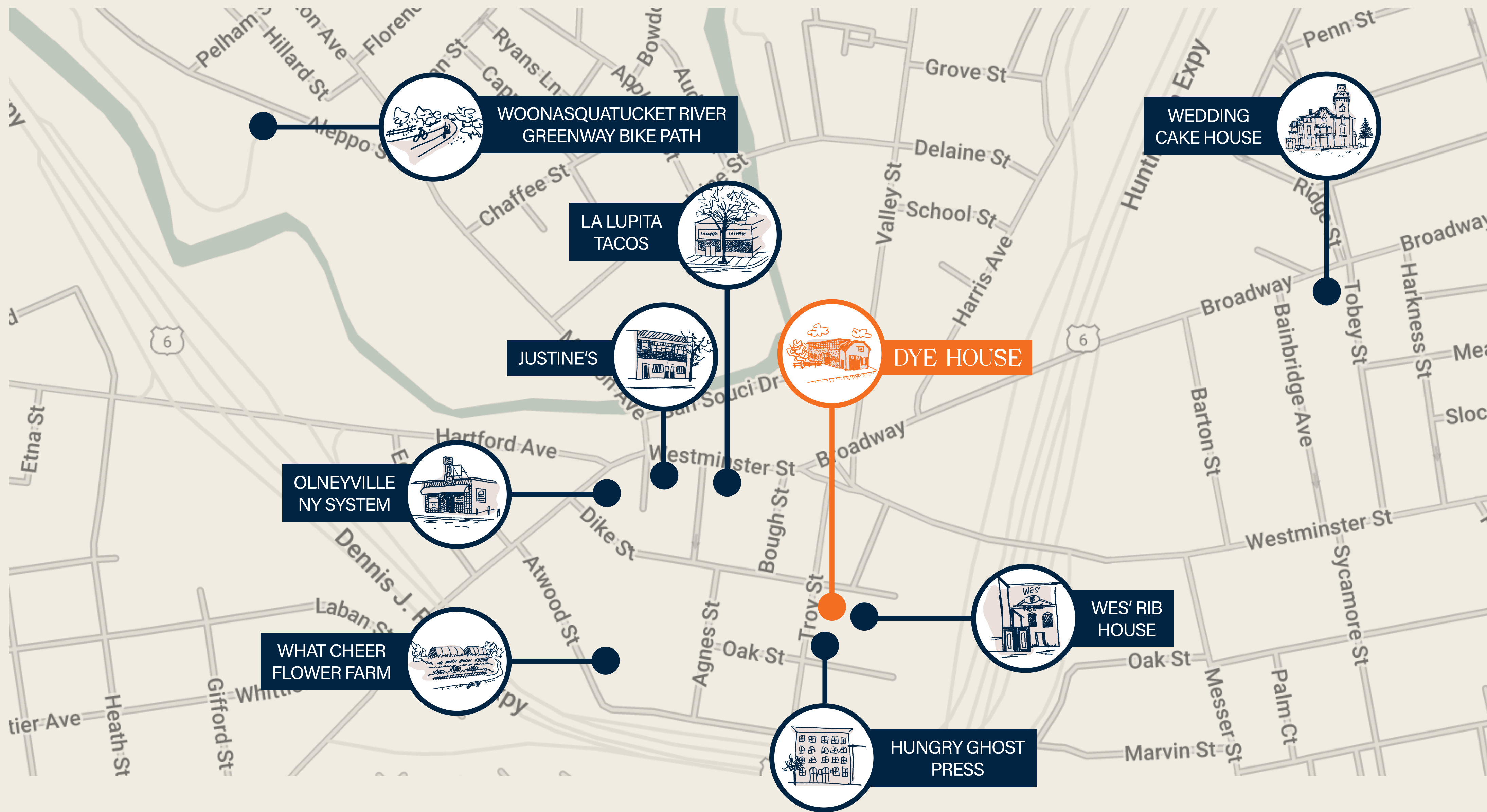
46 DIKE STREET
The Dye House
and Weaving Room
are built



DYE HOUSE

LOCATION

DYE HOUSE

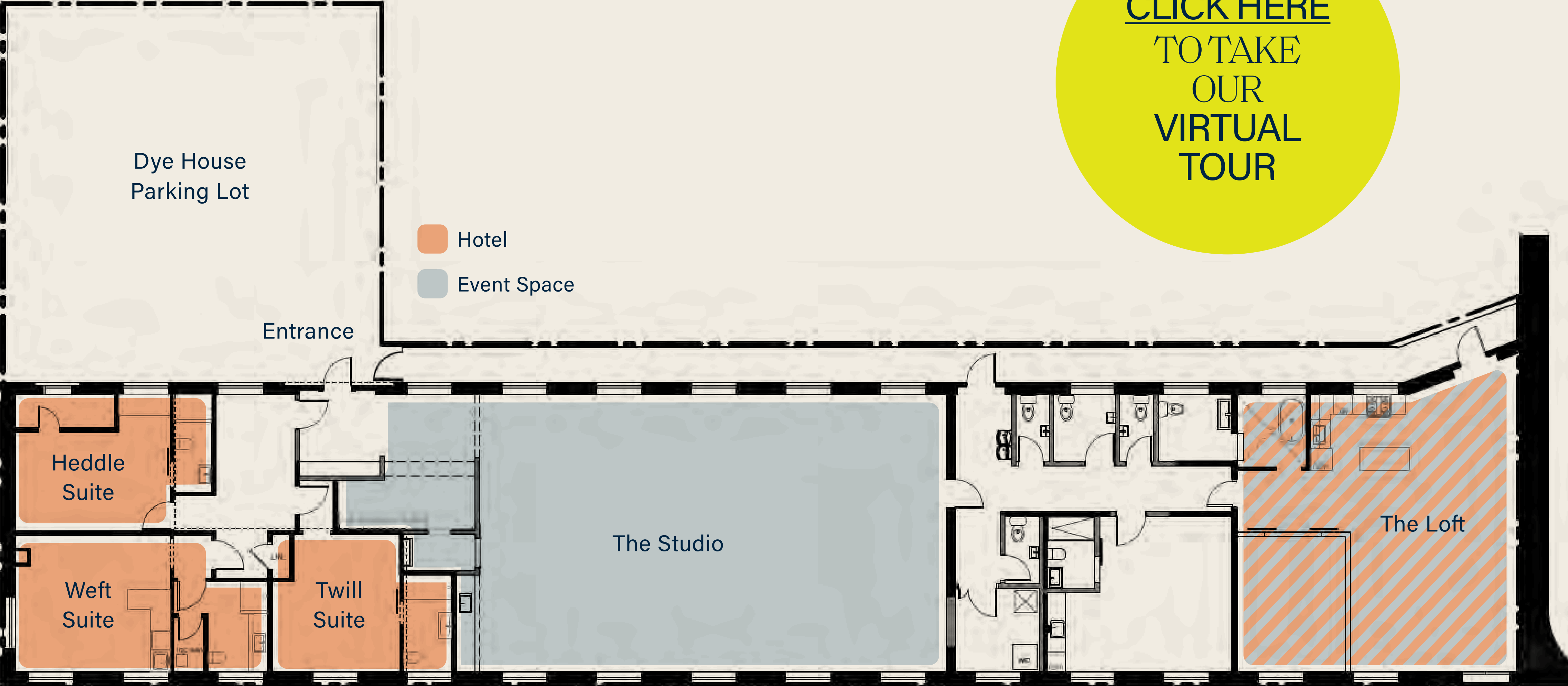




THE SPACE

[CLICK HERE](#)
TO TAKE
OUR
VIRTUAL
TOUR

DYE HOUSE



THE STUDIO

The Studio is our dedicated event space framed by twenty-foot gabled ceilings, the original red brick floor and dozens of windows, the atmosphere is one of expansion and intimacy—ideal for any celebration.

This space is a haven for artists to display their work, bringing community together, a meeting space for remote teams, and the perfect canvas for a photo or film shoot. Dye House is a place to inspire and be inspired.

**Can accommodate up to 150 guests
cocktail style*











DYE HOUSE

THE LOFT

Effortlessly elegant and irresistibly cozy, The Loft is part luxurious suite and part intimate gathering space. With soaring ceilings, a comfy lounge, gourmet kitchen, and seating for six, The Loft is ideal for a small gathering, weekend getaways and special events with a culinary focus.

Conveniently located adjoining the Studio, the Loft also functions as an extension of our main event space for events and celebrations. Surrounded by pops of color and fresh interpretations of Shaker and New England design aesthetics, you'll feel inspired just by being in this space.

**Can accommodate up to 15 people for a private dinner*



THE SUITES



WEFT SUITE

A serene balance of graphic and romantic, this space feels like the perfect little apartment for one or two guests. With a Pierre Frey mural inspired by 18th century French art and a bold checkerboard rug, the atmosphere is soothing and uplifting. Mix a cocktail or cook a simple dinner in the well-appointed kitchenette.



TWILL SUITE

The ultimate space to snuggle, sip or prep for a night out. Mulberry accents and expansive patterns set the restorative mood, and a chocolate-hued bed nook takes the relaxation to a whole new level. Jot down your thoughts or write a postcard home at the classic HAY desk.



HEDDLE SUITE

Ideal for lazy days, festive nights and everything in between, this space finds the unexpected harmony between contemporary millwork, pale Newport stripe wallpaper and a brutalist-inspired table. It's New England design turned on its head. Savor your morning pour over or pour our in-room cocktails at the built-in desk beneath a sunlit (or moonlit) window.

Each suite can accommodate 2 guests.

KEEP IT LOCAL

A selection of local partners for events!



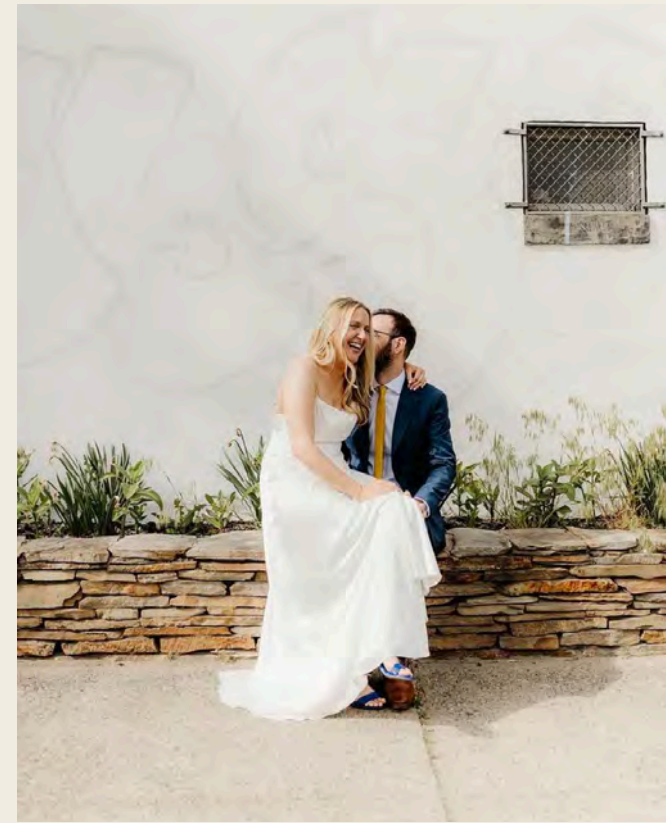
Chilangos



Sweet Talk Floral



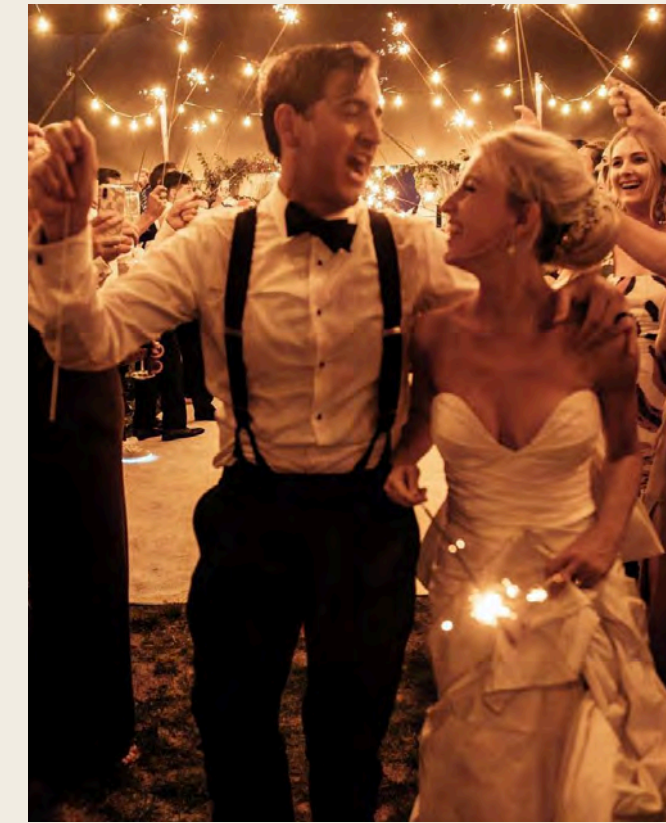
BĀS



Justina Guirguis Photo



Mi Sueño Bakery



Sasha Israel Photo



Easy Entertaining



Little Bitte Artisanal
Cocktails



Anna's Vesuviano



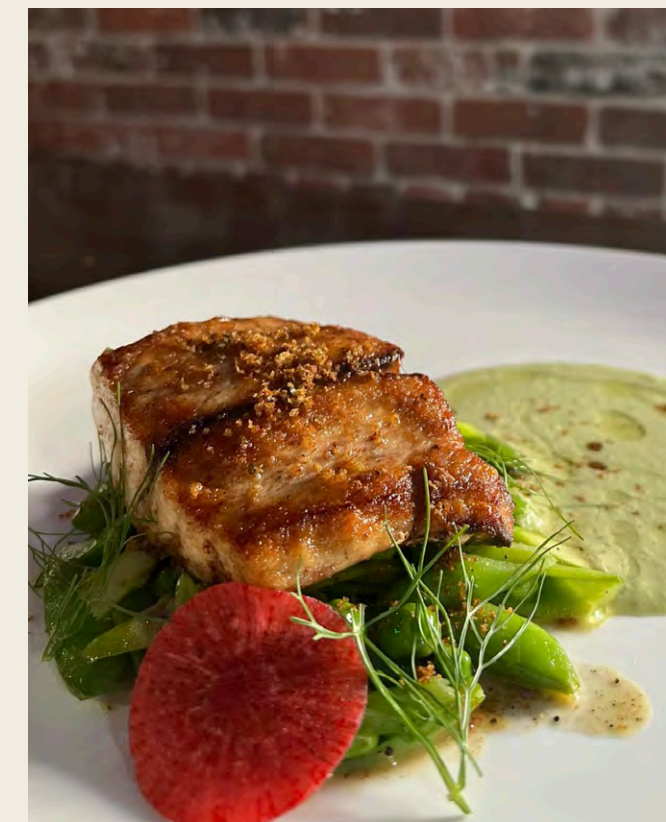
Madden Made Events



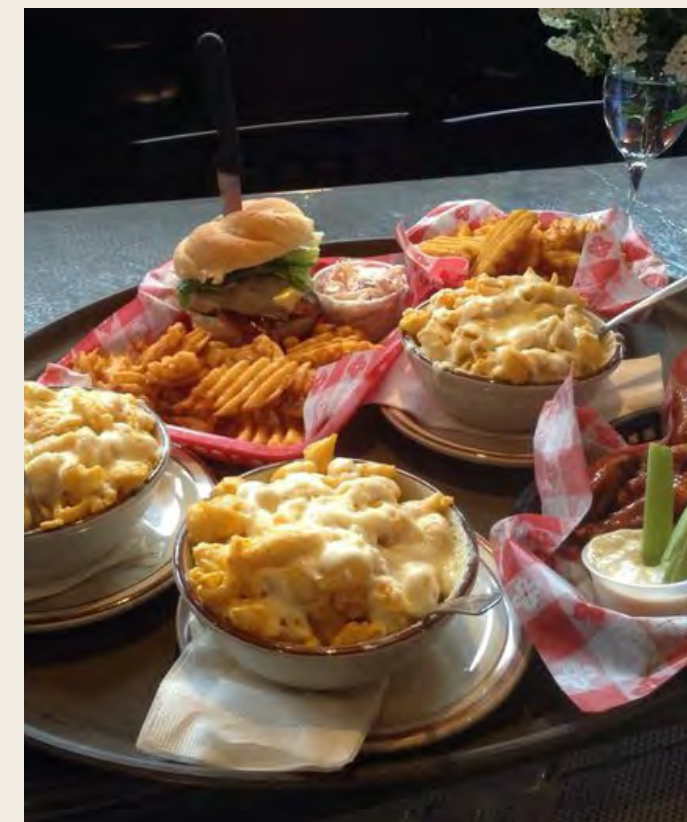
Bites by Bre



Semia Floral Design



Troop



Wes' Rib House



THINGS TO KNOW

AMENITIES

Use of 6 resin 6ft tables, 4 high top cocktail rounds, WiFi, Sonos speaker, projector and screen, and 10 farmhouse tables + 60 farmhouse chairs are available to rent out.

BATHROOMS

4 public bathrooms located near the Studio.

CATERER/BARTENDER/ STAFFING

We welcome all food and beverage vendors to work in our space. When not using a full service caterer, there must be enough staff who will be responsible for setting up tables, clearing tables throughout the night, breakdown at the end of your event and dispose of all trash. Anyone serving alcohol must be certified and all vendors on site must provide a certificate of insurance.

END TIMES

DJ/Band and bar must shut down no later than 11pm. If you are staying for the weekend once the DJ/Band shuts down, you have the option to switch over to the Sonos speakers. There will be a \$1,000 fine applied if your event goes past end time.

DECOR

Decor like open glitter, confetti and sparklers at Dye House is strictly prohibited. Any decor that needs to be adhered in any way beyond string needs to be approved by the Dye House team prior to the event. All decor and signs must be removed immediately following the event.

VENDOR DELIVERIES/ LOAD-OUT

All vendors must pack up their equipment the night of the event and remove it from the building. If same day load out is not possible, pick up times must be approved by the Dye House team. When doing a full weekend buyout, any rentals must be delivered and picked up during the duration of your stay.

FOOD TRUCKS

Food trucks are permitted with approval by the Dye House team. In the case of approval, the client will be responsible for any applicable permits, and the Dye House team must approve the plan for service coverage.

INSURANCE

All vendors are required to provide Certificates of Insurance (at least 1 million in general liability insurance) at least 30 days prior to your event. COIs should list Dye House as an additional insured for the event. Below is the information:

Deacon Hospitality Group LLC
dba Dye House
46 Dike Street
Providence, RI 02909

DEPOSIT

A 50% deposit is due upfront at contract signing. The balance is due 45 days prior to the event. We accept 2 forms of payment check or credit card. All credit card payments are subject to a 1.5% cc surcharge. Payments via check should be made out to Deacon Hospitality Group LLC and mailed to:

1901 S. 9th Street, Suite 410
Philadelphia, PA 19148

COVID PROTOCOL

Clients, guests and vendors are expected to adhere to state and local mandates and guidelines regarding Covid-19 related to social gatherings as well as food and beverage service.

let's get in touch.

EVENT INQUIRIES

46 Dike Street Providence, RI



DyeHouseRI.com [@DyeHouseRI](https://www.instagram.com/DyeHouseRI)